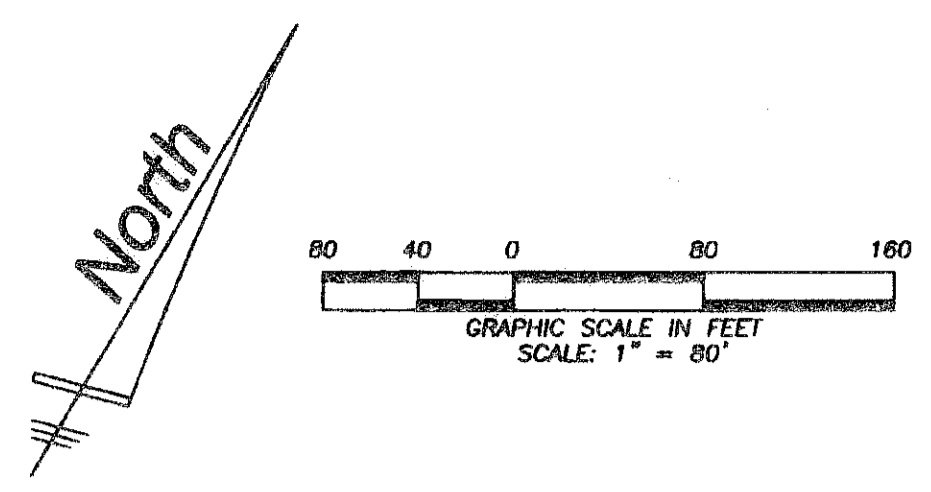
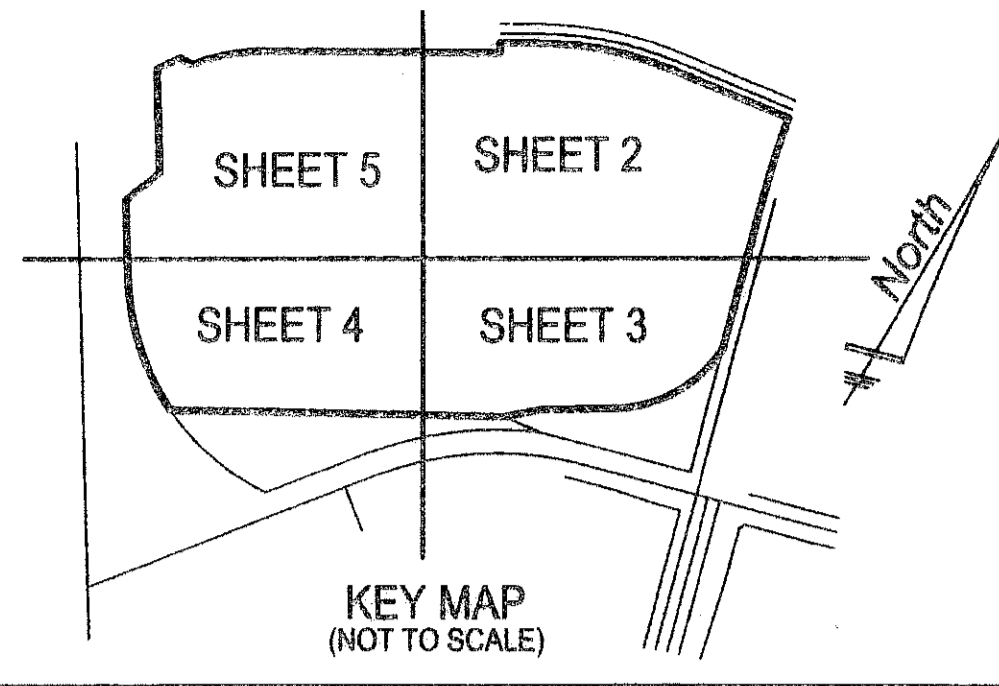
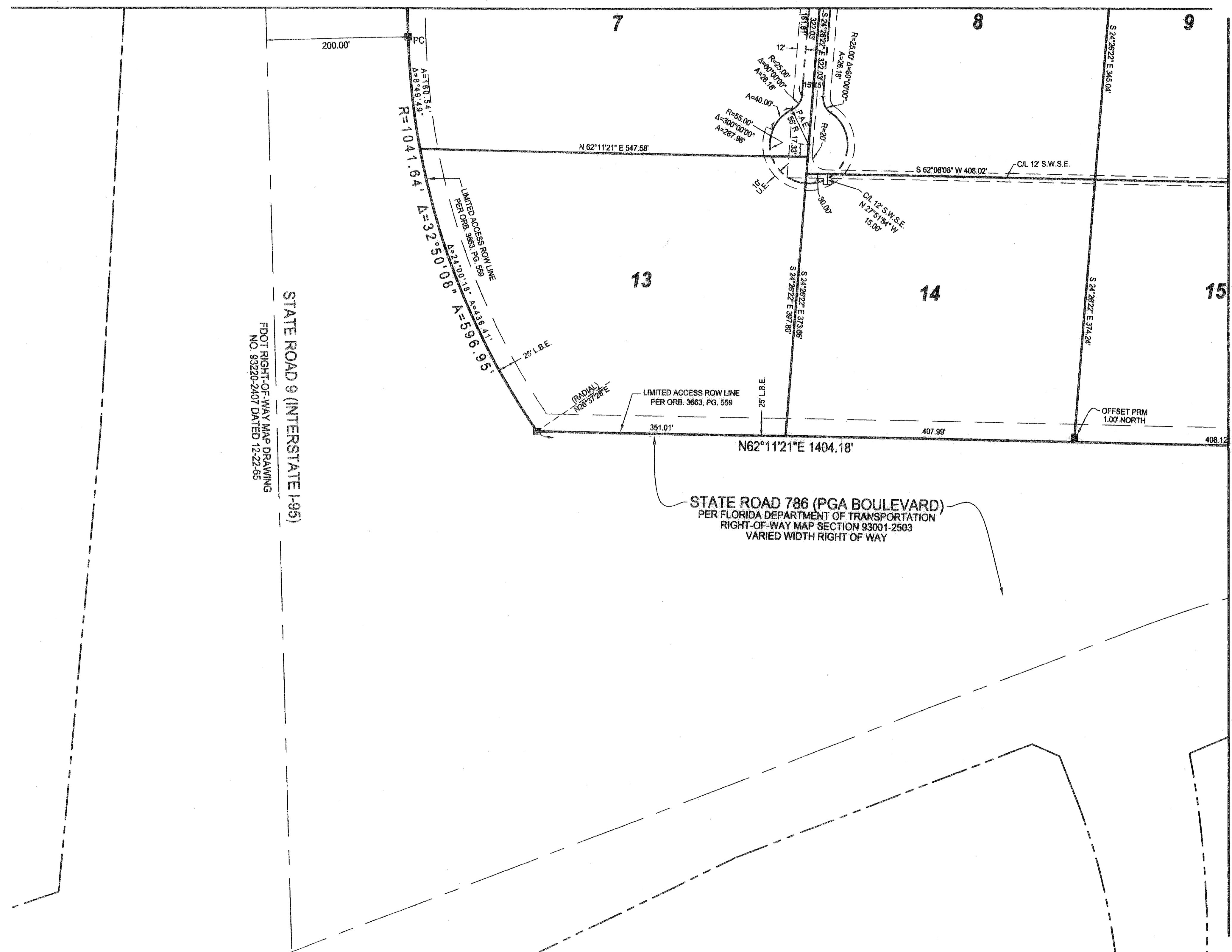


MACARTHUR PARCEL 5A

SITUATE IN SECTION 1, TOWNSHIP 42 SOUTH, RANGE 42 EAST
AND SECTION 6, TOWNSHIP 42 SOUTH, RANGE 43 EAST, CITY
OF PALM BEACH GARDENS, PALM BEACH COUNTY, FLORIDA
MARCH, 2008
SHEET 4 OF 5



MATCH LINE SEE SHEET 5 OF 5



STATE ROAD 9 (INTERSTATE 1-95)
FOOT RIGHT-OF-WAY MAP DRAWING
NO. 89220-2407 DATED 12-22-95

STATE ROAD 786 (PGA BOULEVARD)
PER FLORIDA DEPARTMENT OF TRANSPORTATION
RIGHT-OF-WAY MAP SECTION 93001-2503
VARIED WIDTH RIGHT OF WAY

LIDBERG LAND SURVEYING, INC.

675 West Indian Town Road, Suite 200,
Jupiter, Florida 33458 TEL. 561-746-8454

CAD K:\AUTOCAD2000\014242\98-157\DWG\1578306-1C.DWG			
REF E:\AUTOCAD\MACARTHUR\1578-105C.DWG			
FLD	A.M.	FB. 208	FC. 12,14-15
OFF	S.F.B.		17-18
CKD	D.C.L.	SHEET 4 OF 5	DATE 08/04/02
			DWG D98-157P